

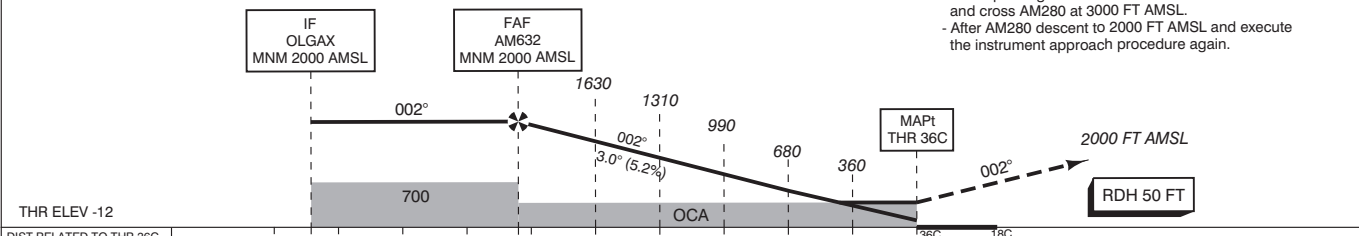
NOTES:

1. Navigation in the initial and intermediate approach segment is primarily based on radar vectors provided by ATC.
2. Execution of the complete procedure via SPL at ATC discretion or in case of COM failure.
3. EGNOS CH 87630 E36B.
4. Uncompensated LNAV/VNAV MNM TEMP: -15° C.
5. LNAV APCH at ATC discretion only.
6. When established on final approach maintain 160 KIAS until 4 NM before threshold.
7. In case of missed approach expedite climb to 2000 FT AMSL.
8. In case of COM failure, the Amsterdam ACC Supervisor may be reached on telephone number +3120 406 3999.

APP	119.055	Schiphol Approach / Departure
	121.205	
	118.405	Schiphol Arrival
	126.680	
TWR	118.105	Schiphol Tower Primary
	119.230	
	135.110	
	121.905	Schiphol Ground Ground Control
	121.500	General Emergency
	243.000	
ATIS	132.980	Arrival Information

TRANSITION LEVEL BY ATC
TRANSITION ALTITUDE 3000 FT AMSL

1. Missed approach
- Inform ATC immediately
- Track 002° MAG to AM283 and climb to 2000 FT AMSL.
2. Missed approach in case of communication failure:
- Track 002° MAG and climb to 3000 FT AMSL;
- When passing 2000 FT AMSL start a left turn to AM280 and cross AM280 at 3000 FT AMSL.
- After AM280 descent to 2000 FT AMSL and execute the instrument approach procedure again.



DIST RELATED TO THR 36C	10	9.4	6.2	5	4	3	2	1	0 NM	18C
GS IN KT	60	80	100	120	140	160	180			
VERTICAL SPEED	320 FT/MIN	425 FT/MIN	530 FT/MIN	635 FT/MIN	745 FT/MIN	850 FT/MIN	955 FT/MIN			

OCA (OCH) ELEV THR 36C: -12.0 FT										
ACFT CAT	LPV	LNAV/VNAV	LNAV	CIRCLING*	* Circling procedures to and landing on RWY 18L and 36L is not permitted, except in case of an emergency.	THR 36C	521821.0N	0044415.7E	MSA BASED ON SPL VOR/DME	
A	201 (213)	335 (347)		630 (641)		AM280	521451.9N	0043546.5E		
B	213 (225)	347 (359)		790 (801)		AM281	520751.5N	0043508.1E		
C	221 (233)	366 (378)	400 (411)	890 (901)		AM282	520740.3N	0044028.9E		
D	231 (244)	394 (406)		900 (911)		AM283	523124.6N	0044527.9E		
DL					AM632	521212.4N	0044341.9E			

CEILING AND VISIBILITY MINIMA				DIRECTIONS ARE MAGNETIC DISTANCES IN NM ALTITUDES AND ELEVATIONS IN FEET AMSL
TAKE-OFF	DAY:	NA	NIGHT:	
LANDING	DAY:	NA	NIGHT:	NA

